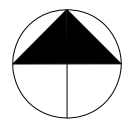


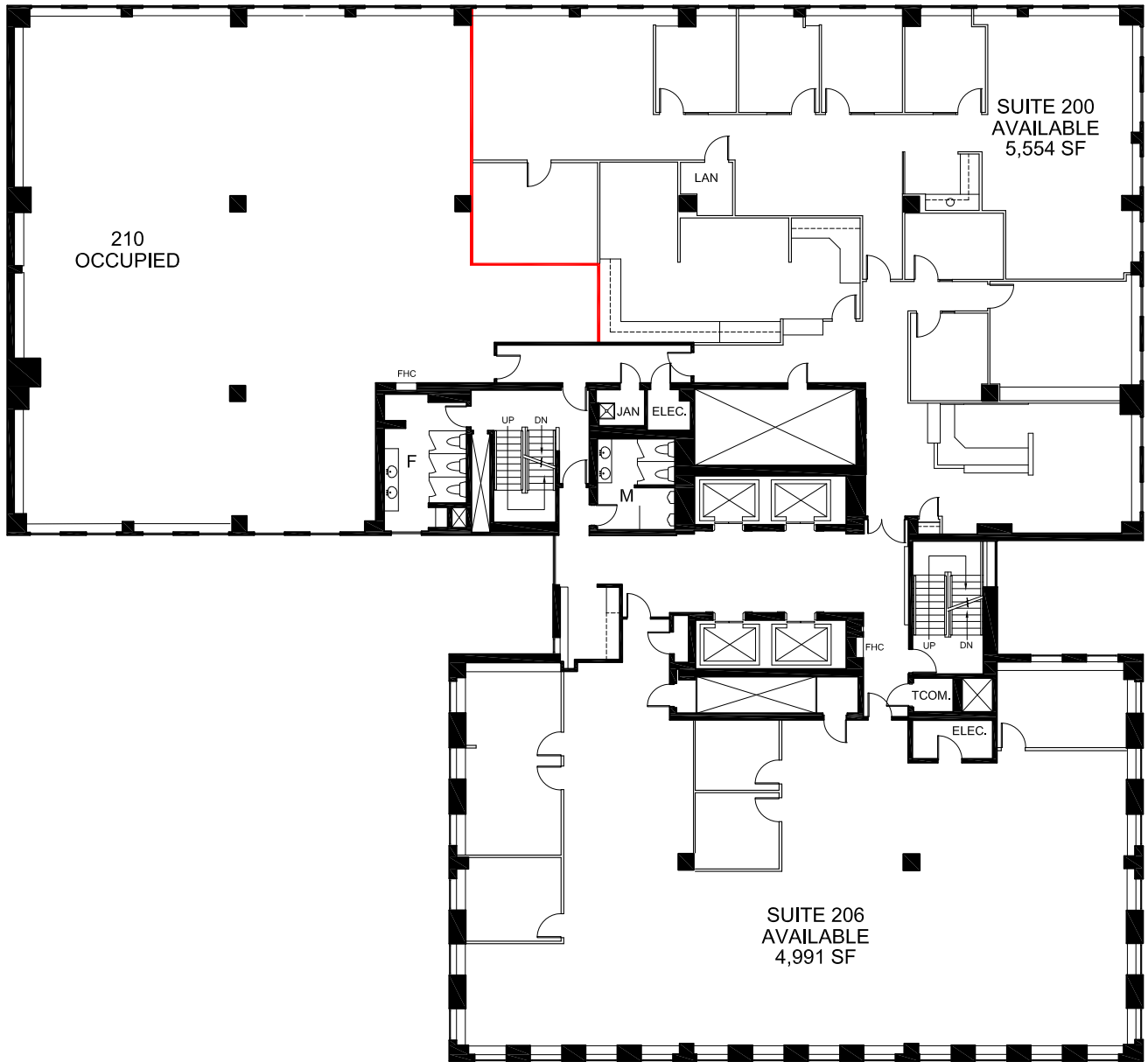
RENTABLE AREA NOTED (SF)
AS PER ANS/BOMA Z65.1 1996

0 10 50 FT.

Hines



505 2 St SW
Calgary, AB
Ground Floor - Vacancies

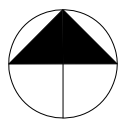


RENTABLE AREA NOTED (SF)
AS PER ANSI/BOMA Z65.1 1996

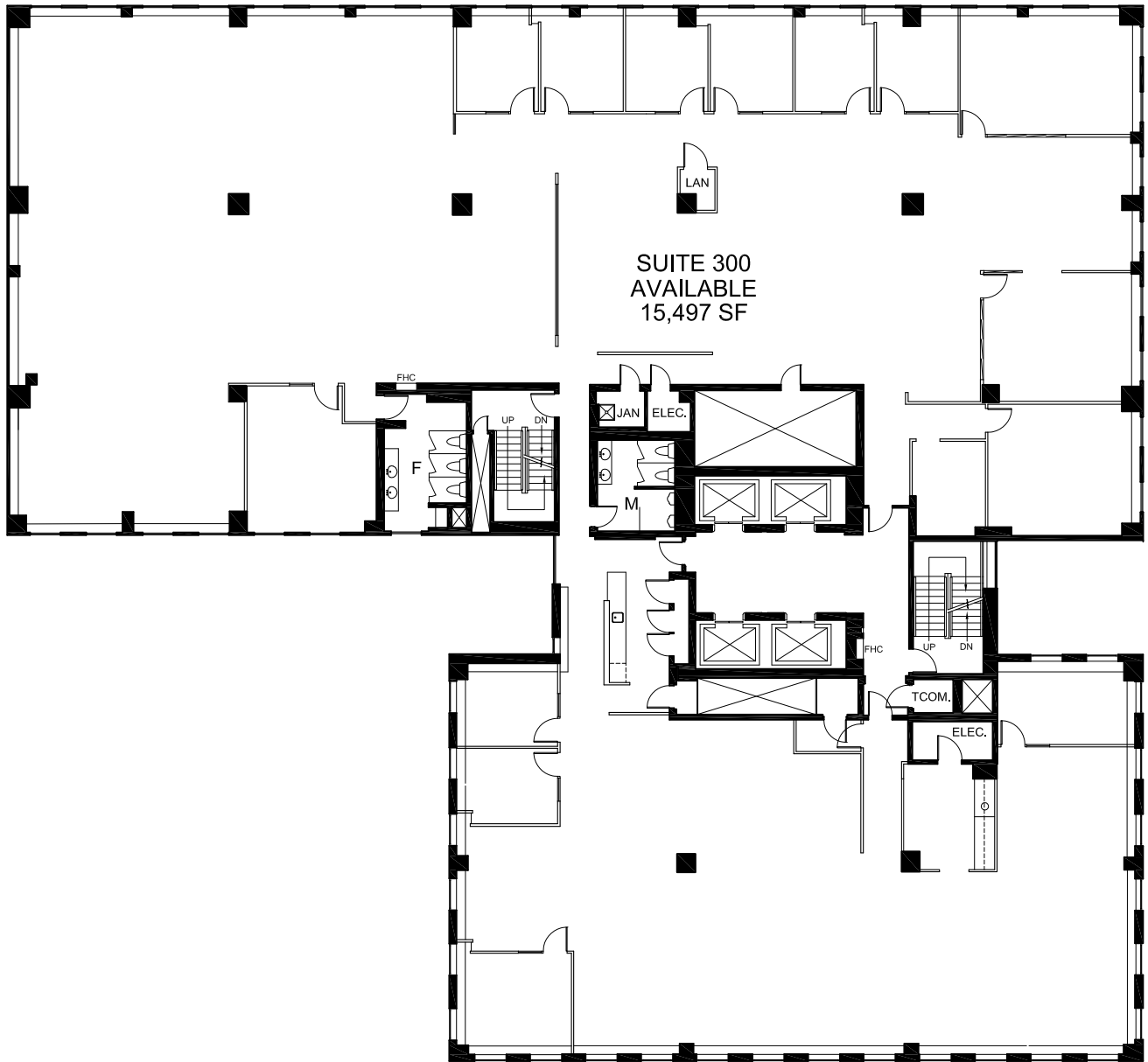
 DEMISING WALL

0 10 50 FT.

Hines



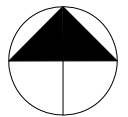
505 2 St SW
Calgary, AB
Second Floor - Vacancies



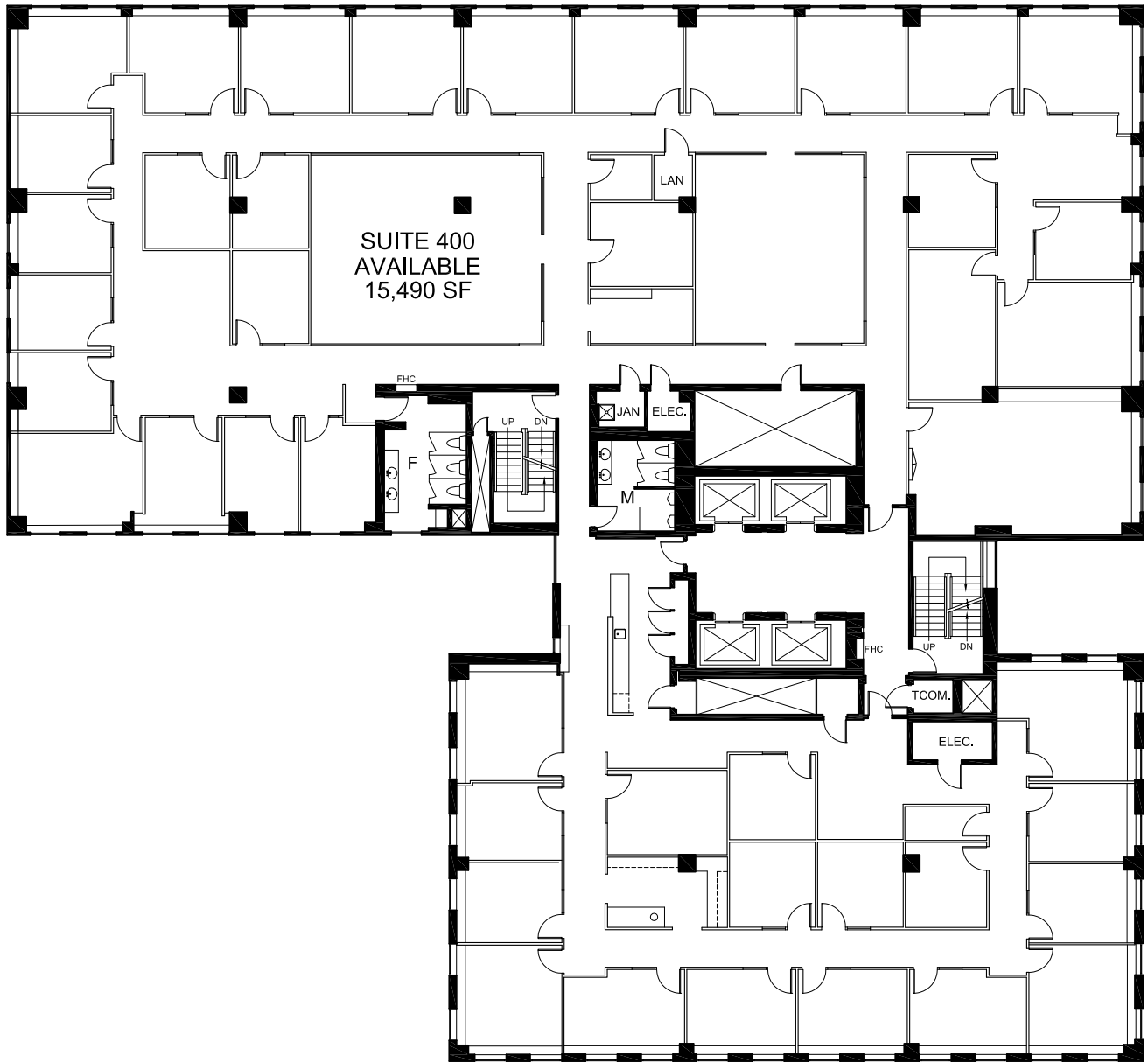
RENTABLE AREA NOTED (SF)
AS PER ANS/BOMA Z65.1 1996



Hines



505 2 St SW
Calgary, AB
Third Floor - Vacancies



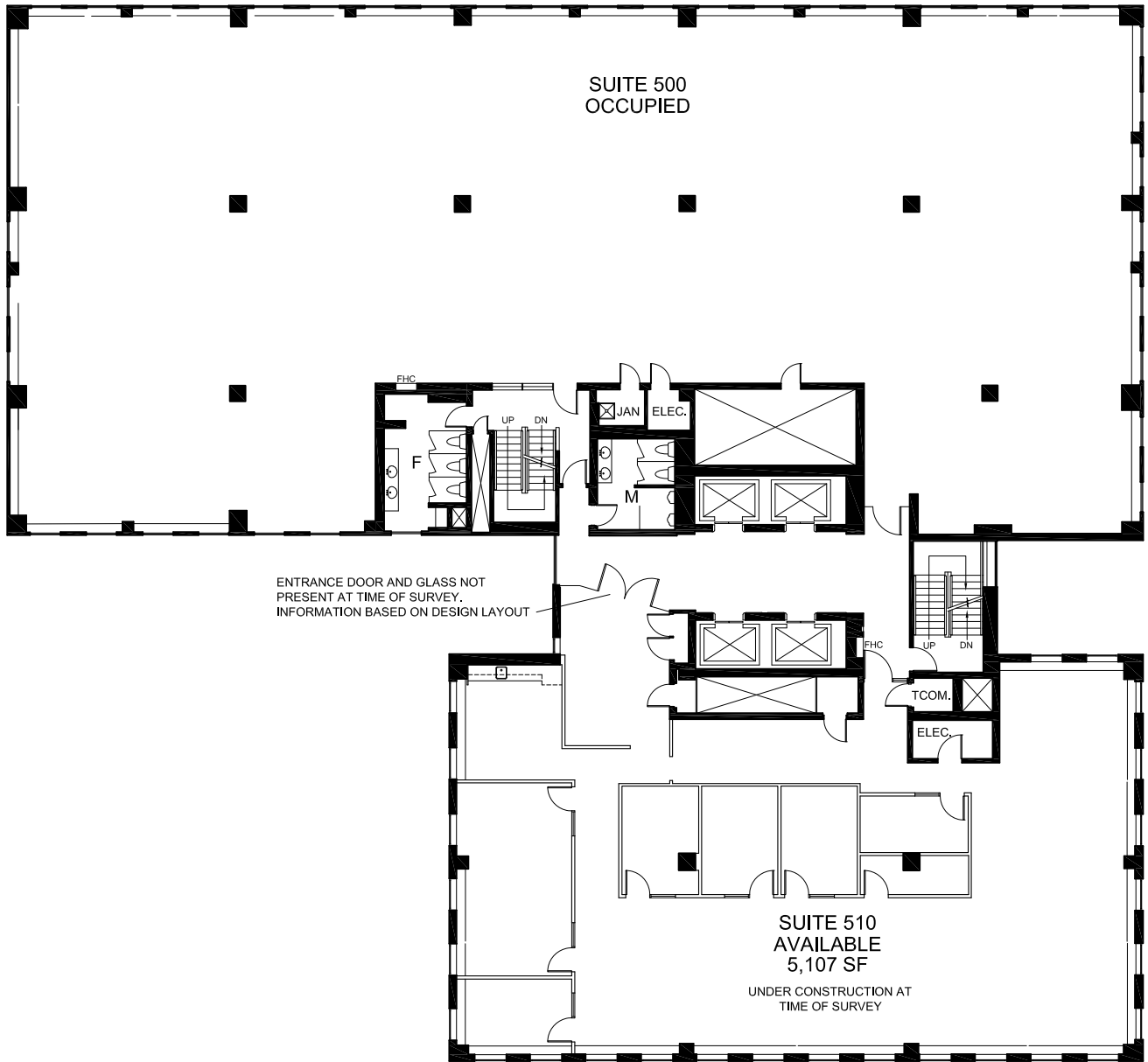
RENTABLE AREA NOTED (SF)
AS PER ANS/BOMA Z65.1 1996



Hines



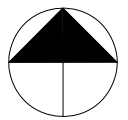
505 2 St SW
Calgary, AB
Fourth Floor - Vacancies



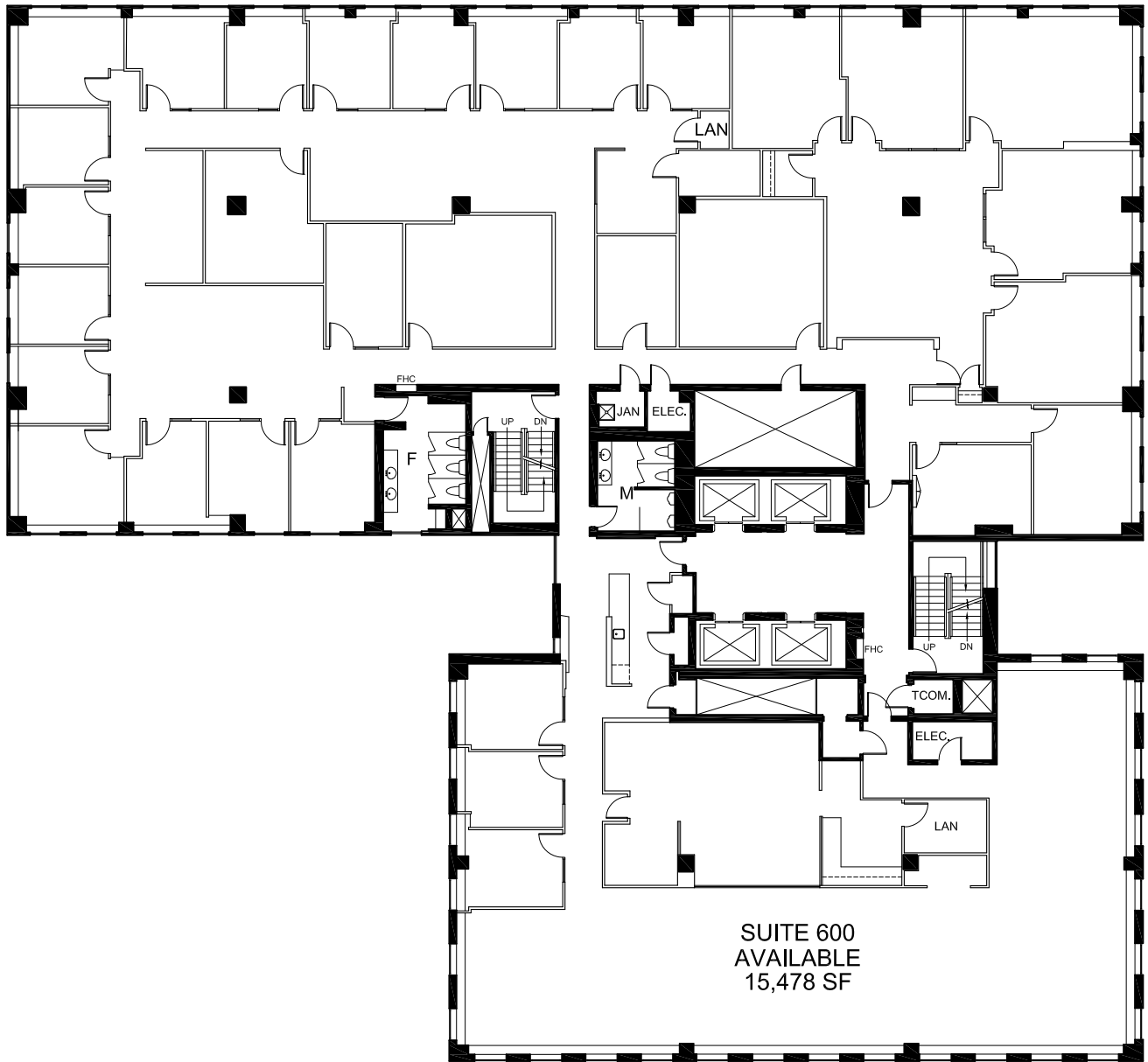
RENTABLE AREA NOTED (SF)
AS PER ANS/BOMA Z65.1 1996



Hines



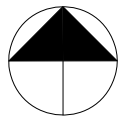
505 2 St SW
Calgary, AB
Fifth Floor - Vacancies



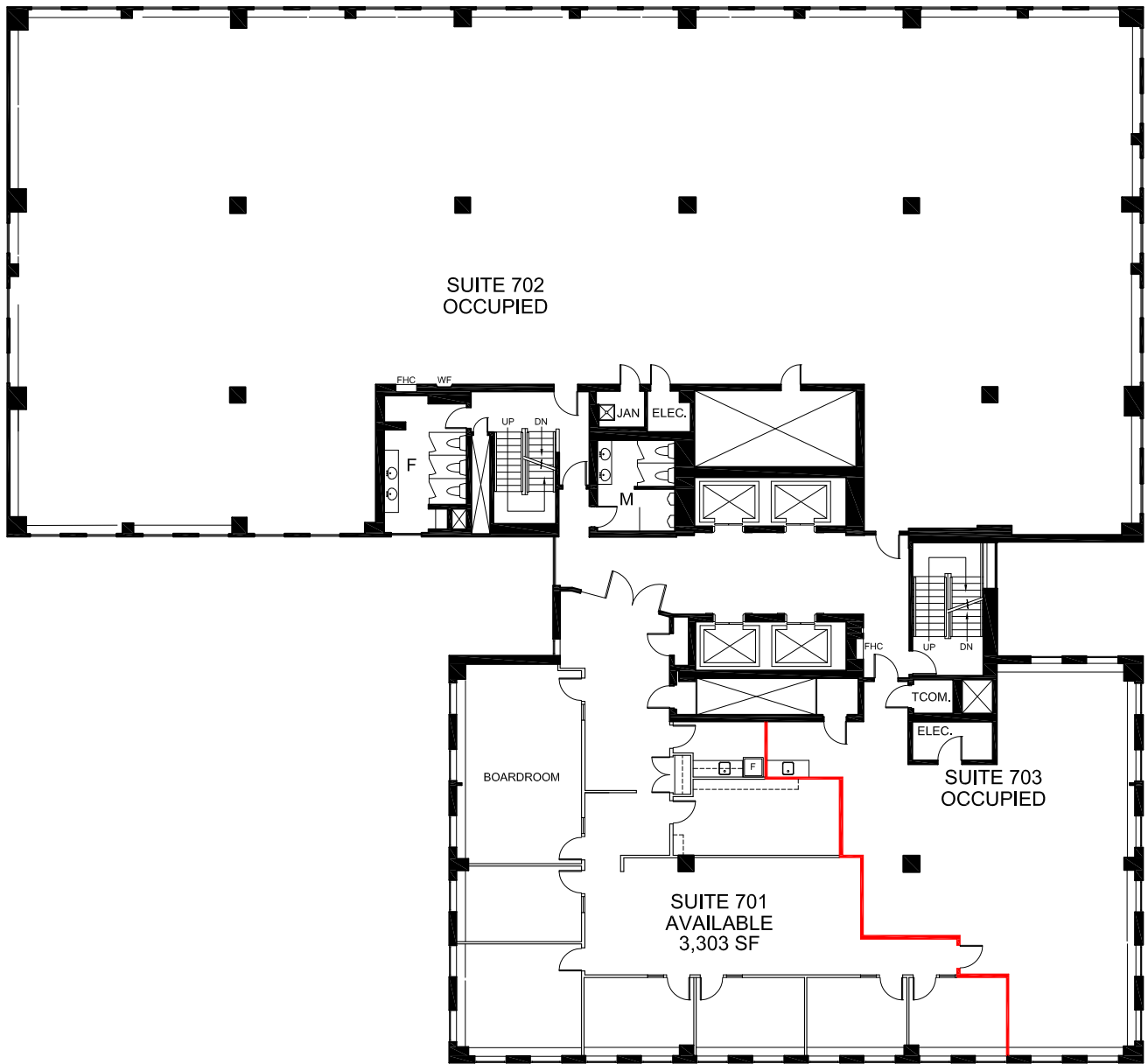
RENTABLE AREA NOTED (SF)
AS PER ANS/BOMA Z65.1 1996



Hines



505 2 St SW
Calgary, AB
Sixth Floor - Vacancies

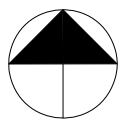


RENTABLE AREA NOTED (SF)
AS PER ANSI/BOMA Z65.1 1996

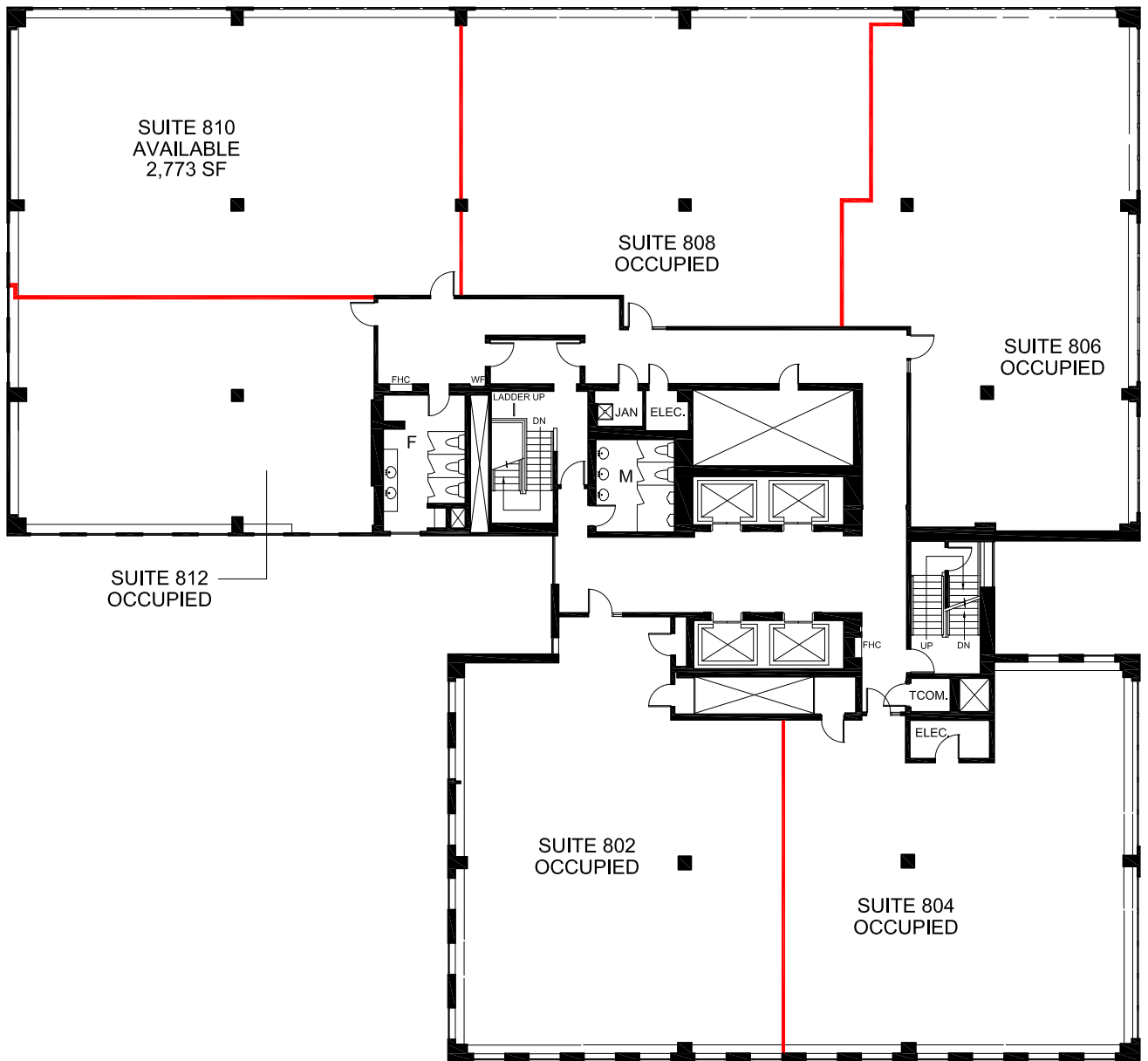
— DEMISING WALL

0 10 50 FT.

Hines



505 2 St SW
Calgary, AB
Seventh Floor - Vacancies

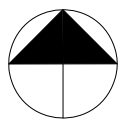


RENTABLE AREA NOTED (SF)
AS PER ANSI/BOMA Z65.1 1996

— DEMISING WALL

0 10 50 FT.

Hines



505 2 St SW
Calgary, AB
Eighth Floor - Vacancies